



Medicare and Your Health Savings Account

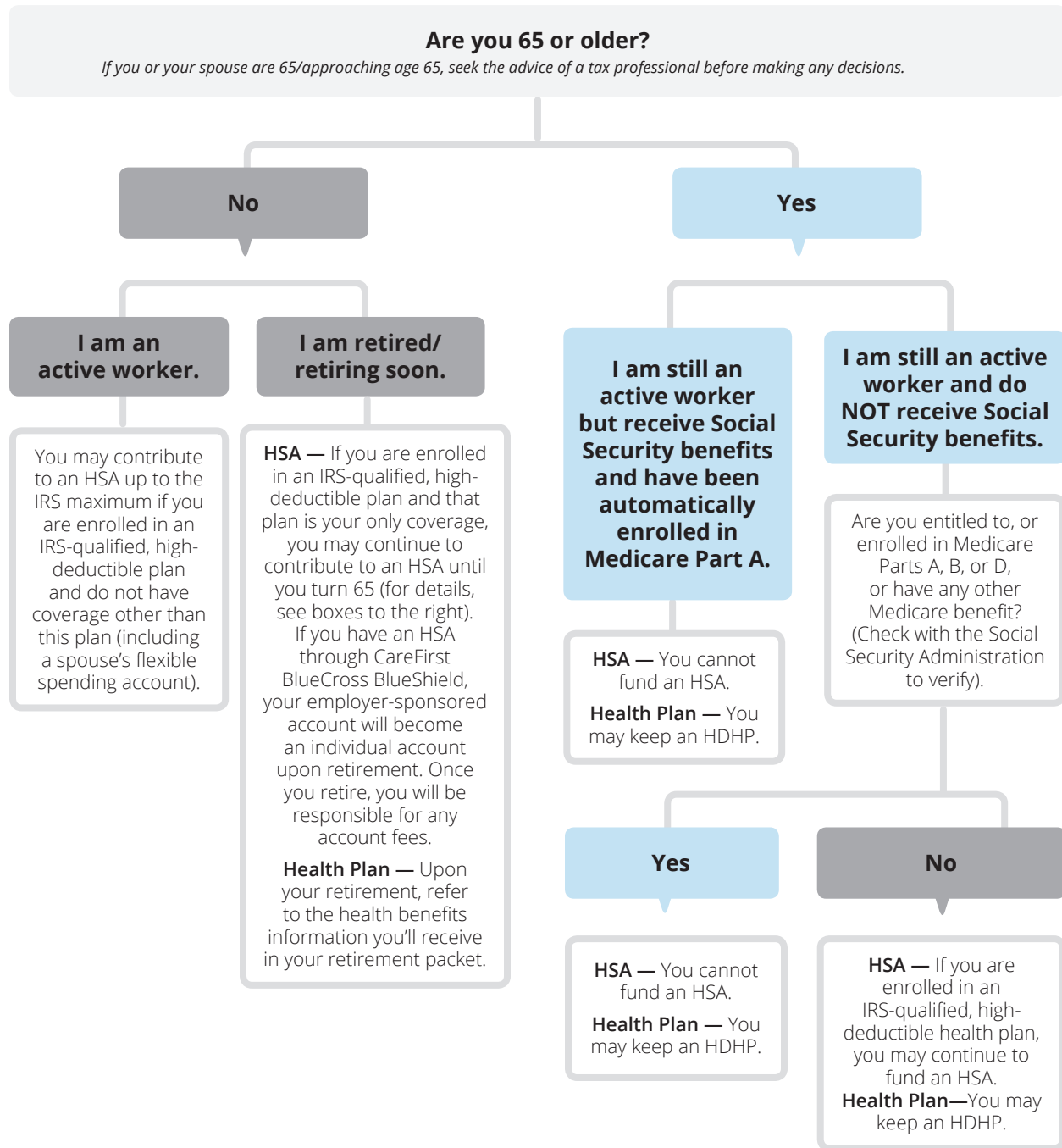
As you approach retirement age, your health plan needs will start to change. It's important to understand how Medicare could impact your health savings account (HSA). By law, those that are eligible for, entitled to or enrolled in Medicare may no longer contribute to an HSA. Use the following chart and frequently asked questions to determine when to stop contributing to your HSA and how to manage your account moving forward.



If you or your spouse are 65/approaching age 65, seek the advice of a tax professional before making decisions.

Contributing to an HSA

Below is an overview of Internal Revenue Service (IRS) rules regarding health savings accounts.



Note: If your spouse is age 65 or older and has applied for or begun receiving Social Security benefits (and is entitled to or enrolled in Medicare), they cannot contribute to an HSA. You may contribute up to the family maximum amount if your spouse is enrolled as your dependent under your HDHP coverage.

Post-deductible medical FSA: A post-deductible medical FSA can be offered alongside an HSA. It reimburses a member after the annual health plan deductible has been met. It can also be used for eligible dental and vision expenses

When I turn 65, will I be automatically enrolled in Medicare Part A?

If you already receive benefits from the Social Security Administration or the Railroad Retirement Board, you are automatically entitled to Medicare Part A and Part B beginning the first day of the month in which you turn 65. No further action is needed on your part.

If you are not receiving Social Security, Railroad Retirement Board or disability benefits, you can enroll in Medicare and a Medicare drug plan up to three months before your 65th birthday and no later than three months after your birth month. You'll need to apply to the Social Security Administration to enroll.

I am turning 65 in April and will be enrolled in Medicare. How much can I contribute to my HSA for the year?

As the account holder, once you are enrolled in Medicare you must pro-rate the contributions for the year coverage begins. Coverage begins on the first day of the month in which you turn 65. In this situation, you would take the allowed contribution for the year (including any catch-up contribution) and divide it by 12. Because you are eligible to contribute from January to March, multiply the monthly amount by three to get your maximum allowed contribution amount.

Does this contribution need to be made prior to my birthday?

No, contributions can be made up until your tax filing deadline. This is usually April 15.

I am married and covered by a family HDHP with an HSA. My spouse is enrolled in Medicare but also covered under the family HDHP. Can I still contribute to the HSA?

Yes, being eligible to contribute to the HSA is determined by the account holder's status, not the status of dependents. A spouse who has Medicare will not disqualify you from making contributions to the HSA up to the family limit, even if they're also covered by the HDHP.

Medicare impacts to an HSA

Eligible:

If you meet the requirements but have not yet applied for Medicare Part A, you can continue to contribute to your HSA after age 65 and postpone applying for Social Security and Medicare until you stop working. There is no penalty for this delay if you maintain your current health coverage.

Entitled:

If you are entitled to Medicare because you signed up for Medicare Part A at age 65 or later and have applied for Social Security Benefits, you cannot continue to contribute to an HSA. You can continue to withdraw any remaining funds in your account.

If you are entitled to Medicare because you signed up for Medicare Part A at age 65 or later but have not yet applied for Social Security Benefits, you can withdraw your application for Part A. There are no penalties and you are free to reapply for Part A in the future. This will allow you to continue to contribute to the HSA until you decide to reapply for Part A.

Enrolled:

If you have applied for/are receiving Social Security Benefits—which automatically entitles you to Medicare Part A—you cannot continue to contribute to an HSA. You can continue to withdraw any remaining funds in your account.

I am married and covered by a family HDHP with an HSA. My spouse enrolled in Medicare as of March 1. At that time, our HDHP changed from family to single coverage. Can I still contribute to our HSA?

Yes, but the change from family to single coverage will impact the amount you can contribute. You may contribute 1/12 of your family contribution (including any catch-up contribution) for each month you had family HDHP coverage, plus (+) 1/12 of your single contribution (including any catch-up contribution) for each month you have single coverage. This is based on your status on the first of the month.

I'm enrolled in Medicare and covered under the HDHP through my employer. Where should I send my claims?

Because you're still enrolled in the HDHP, the claim should be submitted there first, then to Medicare. If there is any patient responsibility after Medicare processes your claim, it can be submitted to your HSA. **Please note:** automatic claim submissions will stop working once you turn 65; you'll need to submit claims manually.

I am enrolled in Medicare and still have money left in my HSA. What happens to these funds?

You can continue to spend HSA funds, tax-free, on eligible medical expenses for you and your eligible dependents. If you (the account holder) are over 65 and funds are used for any expenses other than eligible medical expenses, they will be subject to income tax.

I received Medicare Part A through disability, but I'm returning to work and my payments will stop. Can I start making HSA contributions again at that time?

You're entitled to Medicare after you receive your 25th disability check from Social Security. At that time, you are automatically entered into the Medicare system. After you return to work, your Medicare entitlement continues up to 93 months from the time you first applied for disability. For that reason, you cannot continue contributing to an HSA.

Note: The only way to opt out of Medicare Part A is to:

1. Repay Social Security for all disability payments you received, including medical services received outside of Medicare Part A, **and**
2. Repay Medicare for any Medicare Part A medical expenses that took place during your disability period.

Can funds for Medicare premiums be paid from my HSA?

Your eligibility to claim Medicare premiums from an HSA is determined by the HSA account holder's status (not their dependents). Premiums for Medicare Parts A, B, C and D can be reimbursed from an HSA if the account holder is at least 65 years old. Medicare premiums paid from the HSA can be for the account holder or eligible dependents. Premiums for Medicare supplement insurance are not eligible for reimbursement.

Can I contribute to my HSA if I'm over 65 but not entitled to or enrolled in Medicare?

Yes, but you cannot be entitled to or enrolled in Medicare Parts A, B, C, D or any other Medicare benefits.

Medicare & Social Security Benefits Notice

If you:

1. Do not accept Medicare Part A when you first qualify for it at age 65, and
2. Intend to receive Social Security benefits at some point in the future,

you **must stop** all HSA contributions once you are six months prior to enrolling in Medicare, or you may face a tax penalty. If possible, you may want to consider reaching your maximum annual HSA contribution prior to applying for Medicare Part A.

Questions? Call 866-758-6119

Monday-Friday 8 a.m. to 9 p.m. or
Saturday-Sunday, 9 a.m. to 5 p.m. ET.

Notice of Nondiscrimination and Availability of Language Assistance Services

(UPDATED 8/5/19)

CareFirst BlueCross BlueShield, CareFirst BlueChoice, Inc., CareFirst Diversified Benefits and all of their corporate affiliates (CareFirst) comply with applicable federal civil rights laws and do not discriminate on the basis of race, color, national origin, age, disability or sex. CareFirst does not exclude people or treat them differently because of race, color, national origin, age, disability or sex.

CareFirst:

- Provides free aid and services to people with disabilities to communicate effectively with us, such as:
 - Qualified sign language interpreters
 - Written information in other formats (large print, audio, accessible electronic formats, other formats)
- Provides free language services to people whose primary language is not English, such as:
 - Qualified interpreters
 - Information written in other languages

If you need these services, please call 855-258-6518.

If you believe CareFirst has failed to provide these services, or discriminated in another way, on the basis of race, color, national origin, age, disability or sex, you can file a grievance with our CareFirst Civil Rights Coordinator by mail, fax or email. If you need help filing a grievance, our CareFirst Civil Rights Coordinator is available to help you.

To file a grievance regarding a violation of federal civil rights, please contact the Civil Rights Coordinator as indicated below. Please do not send payments, claims issues, or other documentation to this office.

Civil Rights Coordinator, Corporate Office of Civil Rights

Mailing Address P.O. Box 8894
 Baltimore, Maryland 21224

Email Address civilrightscoordinator@carefirst.com

Telephone Number 410-528-7820

Fax Number 410-505-2011

You can also file a civil rights complaint with the U.S. Department of Health and Human Services, Office for Civil Rights electronically through the Office for Civil Rights Complaint portal, available at <https://ocrportal.hhs.gov/ocr/portal/lobby.jsf> or by mail or phone at:

U.S. Department of Health and Human Services
200 Independence Avenue, SW
Room 509F, HHH Building
Washington, D.C. 20201
800-368-1019, 800-537-7697 (TDD)

Complaint forms are available at <http://www.hhs.gov/ocr/office/file/index.html>.

Foreign Language Assistance

Attention (English): This notice contains information about your insurance coverage. It may contain key dates and you may need to take action by certain deadlines. You have the right to get this information and assistance in your language at no cost. Members should call the phone number on the back of their member identification card. All others may call 855-258-6518 and wait through the dialogue until prompted to push 0. When an agent answers, state the language you need and you will be connected to an interpreter.

አማርኛ (Amharic) ማሳሰቢያ፡- ይህ ማስታወቂያ ስለ መድን ሽፋንዎ መረጃ ይዟል። ከተወሰኑ ቀን-ገደቦች በፊት ሊፈጽሟቸው የሚገቡ ነገሮች ሊኖሩ ስለሚችሉ እነዚህን ወሳኝ ቀናት ሊይዝ ይችላሉ። ይኸን መረጃ የማግኘት እና ያለምንም ክፍያ በቋንቋዎ አገዛ የማግኘት መብት አለዎት። አባል ከሆኑ ከመታወቂያ ካርድዎ በስተጀርባ ላይ ወደተጠቀሰው የስልክ ቁጥር መደወል ይችላሉ። አባል ካልሆኑ ደግሞ ወደ ስልክ ቁጥር 855-258-6518 ደውለው 0ን እንዲጫኑ እስኪነገርዎ ድረስ ንግግሩን መጠበቅ አለብዎ። አንድ ወኪል መልስ ሲሰጥዎ፣ የሚፈልጉትን ቋንቋ ያሳውቁ፣ ከዚያም ከተርጓሚ ጋር ይገናኛሉ።

Èdè Yorùbá (Yoruba) Ìtẹ̀tíléko: Àkíyèsí yìí ní iwífún nípa isẹ̀ adójútòfò rẹ̀. Ó le ní àwọn déètì pàtó o sì le ní láti gbé ìgbésẹ̀ ní àwọn ojú gbèdèké kan. O ni ètò láti gba iwífún yìí àti irànlówó ní èdè rẹ̀ lófèè. Àwọn omọ-egbé gbòdò pe nóm̀bà fòdùn tò wà lẹ̀yìn kààdì idánimò wọn. Àwọn mírán le pe 855-258-6518 kí o sì dúró nípasẹ̀ ijíròrò tí tí a ó fì sọ fún ọ̀ láti tẹ̀ 0. Nígbatí aṣojú kan bá dáhùn, sọ èdè tí o fẹ̀ a ó sì sọ ọ̀ pò mọ̀ ògbufò kan.

Tiếng Việt (Vietnamese) Chú ý: Thông báo này chứa thông tin về phạm vi bảo hiểm của quý vị. Thông báo có thể chứa những ngày quan trọng và quý vị cần hành động trước một số thời hạn nhất định. Quý vị có quyền nhận được thông tin này và hỗ trợ bằng ngôn ngữ của quý vị hoàn toàn miễn phí. Các thành viên nên gọi số điện thoại ở mặt sau của thẻ nhận dạng. Tất cả những người khác có thể gọi số 855-258-6518 và chờ hết cuộc đối thoại cho đến khi được nhắc nhấn phím 0. Khi một tổng đài viên trả lời, hãy nêu rõ ngôn ngữ quý vị cần và quý vị sẽ được kết nối với một thông dịch viên.

Tagalog (Tagalog) Atensyon: Ang abisong ito ay naglalaman ng impormasyon tungkol sa nasasaklawan ng iyong insurance. Maaari itong maglaman ng mga pinakamahalagang petsa at maaaring kailangan mong gumawa ng aksyon ayon sa ilang deadline. May karapatan ka na makuha ang impormasyong ito at tulong sa iyong sariling wika nang walang gastos. Dapat tawagan ng mga Miyembro ang numero ng telepono na nasa likuran ng kanilang identification card. Ang lahat ng iba ay maaaring tumawag sa 855-258-6518 at maghintay hanggang sa dulo ng diyalogo hanggang sa diktahan na pindutin ang 0. Kapag sumagot ang ahente, sabihin ang wika na kailangan mo at ikokonekta ka sa isang interpreter.

Español (Spanish) Atención: Este aviso contiene información sobre su cobertura de seguro. Es posible que incluya fechas clave y que usted tenga que realizar alguna acción antes de ciertas fechas límite. Usted tiene derecho a obtener esta información y asistencia en su idioma sin ningún costo. Los asegurados deben llamar al número de teléfono que se encuentra al reverso de su tarjeta de identificación. Todos los demás pueden llamar al 855-258-6518 y esperar la grabación hasta que se les indique que deben presionar 0. Cuando un agente de seguros responda, indique el idioma que necesita y se le comunicará con un intérprete.

Русский (Russian) Внимание! Настоящее уведомление содержит информацию о вашем страховом обеспечении. В нем могут указываться важные даты, и от вас может потребоваться выполнить некоторые действия до определенного срока. Вы имеете право бесплатно получить настоящие сведения и сопутствующую помощь на удобном вам языке. Участникам следует обращаться по номеру телефона, указанному на тыльной стороне идентификационной карты. Все прочие абоненты могут звонить по номеру 855-258-6518 и ожидать, пока в голосовом меню не будет предложено нажать цифру «0». При ответе агента укажите желаемый язык общения, и вас свяжут с переводчиком.

हिन्दी (Hindi) ध्यान दें: इस सूचना में आपकी बीमा कवरेज के बारे में जानकारी दी गई है। हो सकता है कि इसमें मुख्य तिथियों का उल्लेख हो और आपके लिए किसी नियत समय-सीमा के भीतर काम करना ज़रूरी हो। आपको यह जानकारी और संबंधित सहायता अपनी भाषा में निःशुल्क पाने का अधिकार है। सदस्यों को अपने पहचान पत्र के पीछे दिए गए फ़ोन नंबर पर कॉल करना चाहिए। अन्य सभी लोग 855-258-6518 पर कॉल कर सकते हैं और जब तक 0 दबाने के लिए न कहा जाए, तब तक संवाद की प्रतीक्षा करें। जब कोई एजेंट उत्तर दे तो उसे अपनी भाषा बताएँ और आपको व्याख्याकार से कनेक्ट कर दिया जाएगा।

Bàsòò-wùdù (Bassa) Tò Dùù Cáò! Bǎ nìà kè bá nyò bě kè m̄ gbo kpá bó nì fùà-fúá-tiǐn nyεε jè dyí. Bǎ nìà kè bédé wé jéé bě b́é m̄ kè dε wa ḿ m̄ kè nyuεε nyu hwè b́é wé b́èa kè zi. Ǿ m̀ò nì kpé b́é m̄ kè bǎ nìà kè kè gbo-kpá-kpá m̄ ḿεε dyé dé nì bídí-wùdù mú b́é m̄ kè se wídí d̀ò péè. Kpooò nyò b́é m̄ dá fúùn-nòbà nìà dé waa I.D. káàè dεín nyε. Nyò t̀òò séín m̄ dá nòbà nìà kè: 855-258-6518, kè m̄ m̄ f̀ò tee b́é wa ḱε m̄ gbo ćé b́é m̄ kè nòbà m̀ò 0 ḱε dyi pàd̀àn hwè. Ǿ j̀ú kè nyò d̀ò dyi m̄ g̀ǎ j̀ùǐn, pò wuqu m̄ ḿ pòε dyie, kè nyò d̀ò mu bó nìin b́é Ǿ kè nì wuquò mú zà.

বাংলা (Bengali) লক্ষ্য করুন: এই নোটিশে আপনার বিমা কভারেজ সম্পর্কে তথ্য রয়েছে। এর মধ্যে গুরুত্বপূর্ণ তারিখ থাকতে পারে এবং নির্দিষ্ট তারিখের মধ্যে আপনাকে পদক্ষেপ নিতে হতে পারে। বিনা খরচে নিজের ভাষায় এই তথ্য পাওয়ার এবং সহায়তা পাওয়ার অধিকার আপনার আছে। সদস্যদেরকে তাদের পরিচয়পত্রের পিছনে থাকা নম্বরে কল করতে হবে। অন্যেরা 855-258-6518 নম্বরে কল করে 0 টিপতে না বলা পর্যন্ত অপেক্ষা করতে পারেন। যখন কোনো এজেন্ট উত্তর দেবেন তখন আপনার নিজের ভাষার নাম বলুন এবং আপনাকে দোভাষীর সঙ্গে সংযুক্ত করা হবে।

اردو (Urdu) توجہ: یہ نوٹس آپ کے انشورینس کوریج سے متعلق معلومات پر مشتمل ہے۔ اس میں کلیدی تاریخیں ہو سکتی ہیں اور ممکن ہے کہ آپ کو مخصوص آخری تاریخوں تک کارروائی کرنے کی ضرورت پڑے۔ آپ کے پاس یہ معلومات حاصل کرنے اور بغیر خرچہ کیے اپنی زبان میں مدد حاصل کرنے کا حق ہے۔ ممبران کو اپنے شناختی کارڈ کی پشت پر موجود فون نمبر پر کال کرنی چاہیے۔ سبھی دیگر لوگ 855-258-6518 پر کال کر سکتے ہیں اور 0 دبانے کو کہے جانے تک انتظار کریں۔ ایجنٹ کے جواب دینے پر اپنی مطلوبہ زبان بتائیں اور مترجم سے مربوط ہو جائیں گے۔

فارسی (Farsi) توجه: این اعلامیه حاوی اطلاعاتی درباره پوشش بیمه شما است. ممکن است حاوی تاریخ های مهمی باشد و لازم است تا تاریخ مقرر شده خاصی اقدام کنید. شما از این حق برخوردار هستید تا این اطلاعات و راهنمایی را به صورت رایگان به زبان خودتان دریافت کنید. اعضا باید با شماره درج شده در پشت کارت شناسایی شان تماس بگیرند. سایر افراد می توانند با شماره 855-258-6518 تماس بگیرند و منتظر بمانند تا از آنها خواسته شود عدد 0 را فشار دهند. بعد از پاسخگویی توسط یکی از اپراتورها، زبان مورد نیاز را تنظیم کنید تا به مترجم مربوطه وصل شوید.

اللغة العربية (Arabic) تنبيه: يحتوي هذا الإخطار على معلومات بشأن تغطيتك التأمينية، وقد يحتوي على تواريخ مهمة، وقد تحتاج إلى اتخاذ إجراءات بحلول مواعيد نهائية محددة. يحق لك الحصول على هذه المساعدة والمعلومات بلغتك بدون تحمل أي تكلفة. ينبغي على الأعضاء الاتصال على رقم الهاتف المذكور في ظهر بطاقة تعريف الهوية الخاصة بهم. يمكن للأخريين الاتصال على الرقم 855-258-6518 والانتظار خلال المحادثة حتى يطلب منهم الضغط على رقم 0. عند إجابة أحد الوكلاء، اذكر اللغة التي تحتاج إلى التواصل بها وسيتم توصيلك بأحد المترجمين الفوريين.

中文繁体 (Traditional Chinese) 注意：本聲明包含關於您的保險給付相關資訊。本聲明可能包含重要日期及您在特定期限之前需要採取的行動。您有權利免費獲得這份資訊，以及透過您的母語提供的協助服務。會員請撥打印在身分識別卡背面的電話號碼。其他所有人士可撥打電話 855-258-6518，並等候直到對話提示按下按鍵 0。當接線生回答時，請說出您需要使用的語言，這樣您就能與口譯人員連線。

Igbo (Igbo) Nrubama: Okwa a nwere ozi gbasara mkpuchi nchekwa onwe gi. O nwere ike inwe ubochi ndi di mkpa, i nwere ike ime ihe tupu ufodu ubochi njedebe. I nwere ikike inweta ozi na enyemaka a n'asusu gi na akwughi ugwo o bula. Ndi otu kwesiri ikpo akara ekwentu di n'azu nke kaadi njirimara ha. Ndi ozu niile nwere ike ikpo 855-258-6518 wee chere ububu ahuru roo mgbe amanyere ipi 0. Mgbe onye nnochite anya zara, kwuo asusu i choro, a ga-ejiko gi na onye okowa okwu.

Deutsch (German) Achtung: Diese Mitteilung enthält Informationen über Ihren Versicherungsschutz. Sie kann wichtige Termine beinhalten, und Sie müssen gegebenenfalls innerhalb bestimmter Fristen reagieren. Sie haben das Recht, diese Informationen und weitere Unterstützung kostenlos in Ihrer Sprache zu erhalten. Als Mitglied verwenden Sie bitte die auf der Rückseite Ihrer Karte angegebene Telefonnummer. Alle anderen Personen rufen bitte die Nummer 855-258-6518 an und warten auf die Aufforderung, die Taste 0 zu drücken. Geben Sie dem Mitarbeiter die gewünschte Sprache an, damit er Sie mit einem Dolmetscher verbinden kann.

Français (French) Attention: cet avis contient des informations sur votre couverture d'assurance. Des dates importantes peuvent y figurer et il se peut que vous deviez entreprendre des démarches avant certaines échéances. Vous avez le droit d'obtenir gratuitement ces informations et de l'aide dans votre langue. Les membres doivent appeler le numéro de téléphone figurant à l'arrière de leur carte d'identification. Tous les autres peuvent appeler le 855-258-6518 et, après avoir écouté le message, appuyer sur le 0 lorsqu'ils seront invités à le faire. Lorsqu'un(e) employé(e) répondra, indiquez la langue que vous souhaitez et vous serez mis(e) en relation avec un interprète.

한국어(Korean) 주의: 이 통지서에는 보험 커버리지에 대한 정보가 포함되어 있습니다. 주요 날짜 및 조치를 취해야 하는 특정 기한이 포함될 수 있습니다. 귀하에게는 사용 언어로 해당 정보와 지원을 받을 권리가 있습니다. 회원이신 경우 ID 카드의 뒷면에 있는 전화번호로 연락해 주십시오. 회원이 아닌 경우 855-258-6518 번으로 전화하여 0을 누르라는 메시지가 들릴 때까지 기다리십시오. 연결된 상담원에게 필요한 언어를 말씀하시면 통역 서비스에 연결해 드립니다.

Diné Bizaad (Navajo) Ge': Díí bee íł hane'ígíí bii' dahóló bee éédahózin béeso ách'ááh naanil ník'ist'í'ígíí bá. Bii' dahólóq doo íiyisíí yoolkáálígíí dóo t'áadoo le'é ádadoolyíí'ígíí da yókeedgo t'áa doo bee e'e'aa'ahí ájiil'ííh. Bee ná ahóót'í' díí bee íł hane' dóo níká'ádoowól t'áa nínizaad bee t'áa jiik'é. Atah danilínígíí béesh bee hane'é bee wólta'ígíí nit'izgo bee nee hódolzinígíí bikéédéé' bikáá' bich'í' hodoonihjí'. Aadóo náána'á' éí kójj' dahóoolnih 855-258-6518 dóo yii diiłts'ííł yałtí'ígíí t'áa níléjį́ áádóo éí bikéé'dóo naasbaqas bił adidiilchil. Áká'ánidaalwó'ígíí neidiitáágo, saad bee yáníłt'í'ígíí yii diikił dóo ata' halne'é lá níká'ádoowól.